

GUIDE FOR FAMILIES

What to do when a loved one goes missing in the Central Mediterranean and at border locations on Italian territory





TABLE OF CONTENTS

1. INTRODUCTION	2
2. INFORMATION GATHERING	4
3. THE DIFFERENT POSSIBLE SCENARIOS	6
SCENARIO A: No news	7
SCENARIO B: Survivors arrived in Italy but your family member is missing	8
SCENARIO C: Confirmed shipwreck, but no news of bodies being found	9
SCENARIO D: Body recovered but not identified	10
SCENARIO E: Arrival in Italy together with a deceased relative	12
4. SEARCH PROCEDURES	14
5. IDENTIFICATION PROCEDURES	16
6. BURIAL AND REPATRIATION PROCEDURES	18
7. DETENTION AND CUSTODY PLACES AFTER DISEMBARKATION: HOTSPOTS, CPR AND PRISON	20
8. APPENDICES	23
9. CONTACTS	27

1. INTRO

This guide explains what the first steps are when a **loved one goes missing** while traveling by sea to Italy, in particular toward the coasts of the regions of **Sicily, Sardinia and Calabria**.



We know that you are experiencing moments of extreme distress and uncertainty.

We express our full solidarity. You are not alone in this search!

MEM.MED Memoria Mediterranea is an association, not a governmental or institutional body. MEM.MED supports the families of people who have died or disappeared because of the borders in the Mediterranean.

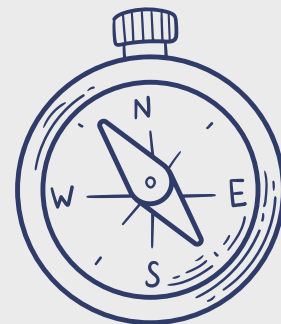
We support mothers, sisters, brothers and relatives in their demands for **truth and justice**, to affirm the right to **freedom of movement**.



This guide stems from an awareness of the difficulties faced by family members in searching for their loved ones and from a desire to offer a practical tool to help them be as informed and independent as possible. However, this guide does not claim to be exhaustive.

This guide is for you if:

- **One of your family members or an acquaintance has left to reach Italy by sea** (if one of your family members or an acquaintance traveled to Italy by other routes see page 29). It is important to clarify that a route toward Italy does not guarantee that a boat arrived or that it was close to the Italian coasts.
- **You have had no news** for at least two/three days
- You have heard of **shipwrecks or interceptions**
- **You are looking for information** on how to begin searches
- If you know that one of your family members or an acquaintance has died in Italy and **you want information on identification, burial or repatriation procedures**

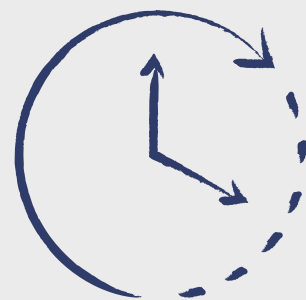


How to use this guide:

- ✓ Follow the steps in the **order indicated**
- 📄 **Keep everything:** numbers, names, documents
- ? If something is unclear, depending on the case, **contact the contacts** listed on page 27

What to expect

- Search, identification, burial and repatriation **procedures are variable and complex**
- **Timeframes are often very long** (months or years)
- There are **legal tools** you can use



2. INFORMATION GATHERING



STEP 1: Immediately gather the essential information

Details of the missing person:



- First name
- Last name
- Place and date of birth
- Nationality
- Physical description (weight, height, hair colour, eyes, etc.)
- Description of distinguishing marks (tattoos, scars, teeth, etc.)
- Clothing at the time of departure (t-shirt, trousers, shoes, bracelets, earrings, relevant personal items, etc.)
- Recent photographs of the face (if possible photos showing the teeth)
- Photographs of distinguishing marks (tattoos, scars, teeth, etc.)

Travel details:

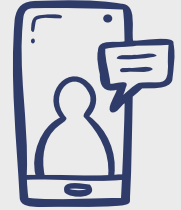


- Place of departure
- Date and time of departure
- Personal phone number
- Thuraya satellite phone/GPS number
- Number of people on board: number of minors, number of women, number of men
- The nationalities of the people on board
- Place of disembarkation in Italy
- Other information deemed useful



STEP 2: Contact family members and travel companions

While you contact associations and support organizations, continue to collect as much information as possible:



1. **Call all family members** who might have had news
2. **Look for the travel companions** and keep their phone contacts
3. **Talk to other families** who knew people on the same boat



TIP

The more information you gather now, the more effective the support you will receive.

Do not hesitate to save on your phone all evidence of the information received (for example screenshots of chats, call recordings, the phone numbers used to exchange information...)



IMPORTANT WARNINGS

- **When you receive information from a person, always ask them how they obtained it**
- Bear in mind that the press and social networks are not always entirely reliable



NEXT STEPS

Continue to follow the guide and carefully read the scenarios below.

3. THE DIFFERENT POSSIBLE SCENARIOS

First of all: identify your situation.

Ogni situazione richiede azioni diverse.

Each situation requires different actions.

Each one will include specific instructions on what to do and whom to contact



SCENARIO A: No news

Go to Page 7

SCENARIO B: Survivors arrived in Italy but your family member is missing

Go to Page 8

SCENARIO C: Confirmed shipwreck, but no news of bodies being found

Go to Page 9

SCENARIO D: Body recovered but not identified

Go to Page
10\11

SCENARIO E: Arrival in Italy together with a deceased relative

Go to Page 12

SCENARIO A: No news




The situation:

- Your family member has departed but **has not given any further news.**
- **You do not know whether the boat arrived, sank, or was intercepted and possibly pushed back**
- **There are no other people from the same boat you can contact**



What to do and what to expect:

- If you have no information, you can contact **Alarm Phone**, an emergency hotline for people in distress at sea. The Alarm Phone network documents cases of emergency received on its phone line and the calls of families searching for their missing loved ones. It is possible that the network has some information that could help you in your search (see page 27 for contacts).
 - If you have reliable information that makes you think your family member arrived in Italy, there are **associations that provide legal support**. Thanks to them you can appoint a lawyer FREE OF CHARGE (see page x for contacts) to assist you in the search.
 - Monitor the **risk of criminalisation**: some people are identified as ‘smugglers’ and arrested simply because they were driving the boat. If you think your family member may have been criminalised for this reason, you can contact Captain Support and the Dal Mare al Carcere (From Sea to Prison) Project (see page 27 for contact details). For more information on CPR and PRISONS, see pages 21 and 22.
 - If you have had no news for weeks, it is likely that an **undocumented shipwreck occurred or that there was a pushback** to Libya, Tunisia or Algeria.
 - If in the following days a body is found that could be your family member, see **SCENARIO D**.
 - **Reporting a missing person**: if you or a member of your family is in Italy, you can go to a police station to report the disappearance of your loved one. In some cases, this can help gather useful information for the search.
-  **Please note:** this procedure requires you to present your documents (identity card, passport). Depending on your personal situation, we recommend that you first consult a solicitor you trust and have them accompany you.

SCENARIO B: Survivors arrived in Italy but your family member is missing




The situation:

- **Some people** who traveled on the boat have arrived in Italy
- You have no news from your family member and are **not certain whether they are among the survivors who arrived**
- **You have contacts with those who were on the same boat**



What to do **IMMEDIATELY**:

- If you can, **contact the travel companions** right away to get direct testimonies.
 - **Ask for precise details** on when and how they lost track of your family member.
 - **Collect information about the arrival:** place/city and date.
 - **There are associations that provide legal support.** Thanks to them, you can appoint a solicitor **FREE OF CHARGE** to request specific information from the authorities about the circumstances of the disappearance and find out what kind of searches have been carried out (see page 27 for contacts).
 - **Monitor the risk of criminalisation:** some people are identified as ‘smugglers’ and arrested simply because they were driving the boat. If you think your family member may have been criminalised for this reason, you can contact Captain Support and the Dal Mare al Carcere (From Sea to Prison) Project (see page 27 for contact details). For more information on CPR and PRISONS, see pages 21 and 22.
 - If in the following days a body is found that could be your family member, see **SCENARIO D**.
 - **Reporting a missing person:** if you or a member of your family is in Italy, you can go to a police station to report the disappearance of your loved one. In some cases, this can help gather useful information for the search.
-  **Please note:** this procedure requires you to present your documents (identity card, passport). Depending on your personal situation, we recommend that you first consult a solicitor you trust and have them accompany you.

SCENARIO C: Confirmed shipwreck, but no news of bodies being found


The situation:



- It is confirmed **that there was a shipwreck.**
- You know that **your family member was on that boat**



What to do and what to expect:

- If you have news of a shipwreck, it is **NOT CERTAIN** that it is the same boat your family member was on: many shipwrecks occur in the Mediterranean, and often several boats depart at the same time from the same place. Get in touch with associations that monitor shipwrecks and rescues in the Mediterranean Sea (Alarm Phone) to verify with them whether the data match.
 - The search for bodies carried out by the competent authorities is not automatic and may vary depending on the location (if bodies are found in the following days, see **SCENARIO D**).
 - **Reporting a missing person:** if you or a member of your family is in Italy, you can go to a police station to report the disappearance of your loved one. In some cases, this can help gather useful information for the search.
-  **Please note:** this procedure requires you to present your documents (identity card, passport). Depending on your personal situation, we recommend that you first consult a solicitor you trust and have them accompany you.

SCENARIO D: Body recovered but not identified



The situation:

- A body has been recovered that could belong to your family member
- The body has not yet been officially identified



What to do and what to expect:

YOU CAN GO TO THE PLACE WHERE THE BODY WAS DISEMBARKED

What to do immediately:

- Prepare documents, recent photos, detailed physical description, distinguishing marks.
- Go as soon as possible to the police station (Questura) of the city where the body was disembarked.
- Explain the situation to the officers and hand over all documents and collected information (ask for a mediator if necessary)
- Clearly communicate the name and details of the missing person. Make sure they are written correctly in the official documents.

YOU CANNOT GO TO THE PLACE WHERE THE BODY WAS DISEMBARKED

What to do immediately:

- Prepare documents, recent photos, detailed physical description, distinguishing marks.
- You need to appoint a lawyer in Italy. Contact an association that can provide you with free legal support (see page 27 for contacts), which will assist you remotely throughout the proceedings.
- Contact the Ministry of Foreign Affairs of your country to inform them and request information (even if they rarely take concrete action).

Act as soon as possible: if identification procedures are not activated within the first week after recovery, the authorities may bury the body without a name.

For more information on procedures for identifying corpses, see page 16.

SCENARIO D: Body recovered but not identified



Remember: if you have relatives in Italy who are able to recognize the body, they can go in your place.

Identification procedures are easier if one goes in person to the Questura of the place where the body was disembarked.



Please note: this procedure requires you to present your documents (identity card, passport). Depending on your personal situation, we recommend that you first consult a solicitor you trust and have them accompany you.

SCENARIO E: Arrival in Italy together with a deceased relative



The situation:

- You have arrived in Italy with the body of a relative.



What to do IMMEDIATELY:

- **Immediately inform the authorities** (Police, Coast Guard, healthcare staff) **and the associations** present at the disembarkation that you have arrived with the body of a relative.
- **Request the presence of a language mediator** during all communications with the authorities. This helps avoid mistakes and ensures better understanding.



RIGHTS:

- **Be present during the procedures** for identifying and burying the body. Clearly communicate the name and details of the deceased to the relevant authorities and **ensure that they are written correctly in the official documents.**
- Obtaining **information about the burial** (see page 18 for more information).
- **Choose the place of burial:** in Italy, in another European country or in your country of origin.
- **Repatriate the body to the country of origin:** contact your country's Consulate or Embassy (if you are unable to do so, ask another family member, your solicitor or the association supporting you to do so).
- That the **religious or cultural burial rites** of the deceased person are respected.



Please note!

- If you encounter any difficulties, you can contact the **associations in the territory** (see page 27 for contact details).

These **associations** can



Help you **talk to the authorities**.

Put you in touch with a lawyer for free legal support.

- **Always keep a copy of all documents** issued and communications with the authorities and institutions.
- If you do not speak Italian well, **always ask for a language mediator**.
- **Do not hesitate to ask for help from support groups and associations**.



NEXT STEPS

Now that you have identified your scenario, go to the specific sections for detailed procedures.

4. SEARCH PROCEDURES

Make sure you have **carefully collected all the information** described on page 4.

The more information you can gather, the easier it will be to get support and carry on the search.



By contacting other families of missing or deceased persons and your communities in Italy and Europe, you can find concrete support and solidarity.

Search in the Central Mediterranean

You can contact **Alarm Phone** to look for news about the outcome of the sea journey. By sharing the data you have collected, you may receive information regarding arrivals in Italy, shipwrecks, or pushbacks.

Search on Italian territory

- It is possible to **report the disappearance** of a family member at any police authority office (Questura, Carabinieri).
- You can **appoint a lawyer** to file a missing person report on your behalf (see contact list on page 27).
- L'avvocatə può anche inviare richieste formali per richiedere informazioni alle **strutture di accoglienza e detenzione - CAS*, SAI*, CPR, Questure, Prefetture** (Vedi pagine 21-22)

*CAS are extraordinary reception centers, facilities of various kinds for the reception of persons seeking international protection, where they are generally transferred after arrival when they apply for asylum. They represent the standard method of reception on Italian territory.



*SAI stands for SISTEMA ACCOGLIENZA INTEGRAZIONE (Reception and Integration System), i.e. the reception system managed by local authorities, where beneficiaries of international protection, unaccompanied foreign minors, asylum seekers in vulnerable situations and, within the limits of available places, holders of specific residence permits can be accommodated.

Information box: BODIES IN THE SEA



When a body remains in water for prolonged periods, it undergoes a natural process that gradually transforms it.

- Over time, **physical features become less recognizable.**
- Tattoos and scars, as well as elements such as clothing, personal items, and teeth, are preserved longer and can be decisive.

What happens to bodies at sea:

- Sea currents: **Bodies can be carried away from the site of the shipwreck**, even for tens or hundreds of kilometers, or they can sink deep and never resurface.
- **Recovery not guaranteed: Not all bodies are recovered; many remain lost at sea or wash up on distant shores, even in other countries.**

How bodies are searched for

- The competent authorities do not always initiate searches for bodies after a shipwreck.
- Usually, search operations are concentrated in the first few hours and days, then suspended if there are no new elements or reports.
- Priority is given to rescuing survivors, while the recovery of bodies may be limited by sea conditions and available resources.
- If bodies are found on the coast, the local authorities are responsible for their recovery

Information box: LIMITS AND OBSTACLES

- The response times of institutions can be very long (even months)
- Information is not always found
- Not all shipwrecks or pushbacks are monitored



5. PROCEDURES FOR IDENTIFYING BODIES



Toward identification

- **The information held by families** (photos, descriptions, relatives' DNA – so-called ANTE MORTEM DATA) provided to the authorities can be compared with **the information collected on the body after its recovery** (photos, fingerprints, personal effects, DNA – so-called POST MORTEM DATA).
- The comparison of data collected before and after death is the first fundamental step. If a match is found between the information provided by the family and that collected on the body, then the actual identification procedures can begin.



Visual identification

This type of identification can be of two kinds:

1. **Physically seeing the body.** Remote possibility: for hygienic-sanitary and legal reasons, bodies are sealed shortly after being brought ashore. In these cases, family members cannot see the body directly
2. **Viewing photographs of the bodies provided by the authorities** at the relevant Questura. This is possible only if the body is recognizable and not in an advanced state of decomposition.



Identification through DNA

DNA comparison: when visual recognition is not possible, a comparison can be requested between the DNA of the body and that of a relative. This procedure is extremely complex if you are not in Italy. The collection and transmission of DNA is not automatic and in some countries cannot be carried out.

There is no international system that allows comparison between DNA samples taken in different countries. For this reason, it is best to contact a lawyer.

Degrees of kinship and reliability of the test:

- **First-degree relatives (parents, sons/daughters, brothers/sisters):** DNA testing is highly reliable. The genetic match between parent and child or between siblings allows very secure identification, with minimal margin of error.
- **Second-degree relatives (uncles/aunts, grandparents, nephews/nieces):** Reliability remains good, but decreases compared to first degree. In these cases, the test can indicate a strong probability of kinship, but it does not give absolute certainty.

6. BURIAL AND REPATRIATION PROCEDURES



Burial and religious matters

- **Burial in Italy:** if a body is not identified, it is buried with the wording “unknown” and, if applicable, with the date of the shipwreck. In such cases, burial takes place in the province where the disembarkation occurred. The same applies to identified bodies when families do not request repatriation or do not request a specific burial place.
- **Respect for religious rites:** families have the right to request that the religious or cultural rite of the deceased person be respected. In Italy, there are Islamic cemeteries, non-Catholic cemeteries, or areas dedicated to other faiths.
- **Request for information:** families have the right to receive information on the place of burial of the body and to obtain copies of documents relating to the death and burial.

The right to burial according to one’s religious belief, the choice of burial place, or the tracing of the body and other related information are not automatically guaranteed. In order for your requests to be taken into account, you must **contact the competent authorities** (Prefecture and Municipalities) **as soon as possible and apply direct pressure**. Do not hesitate to contact a lawyer to submit your requests.

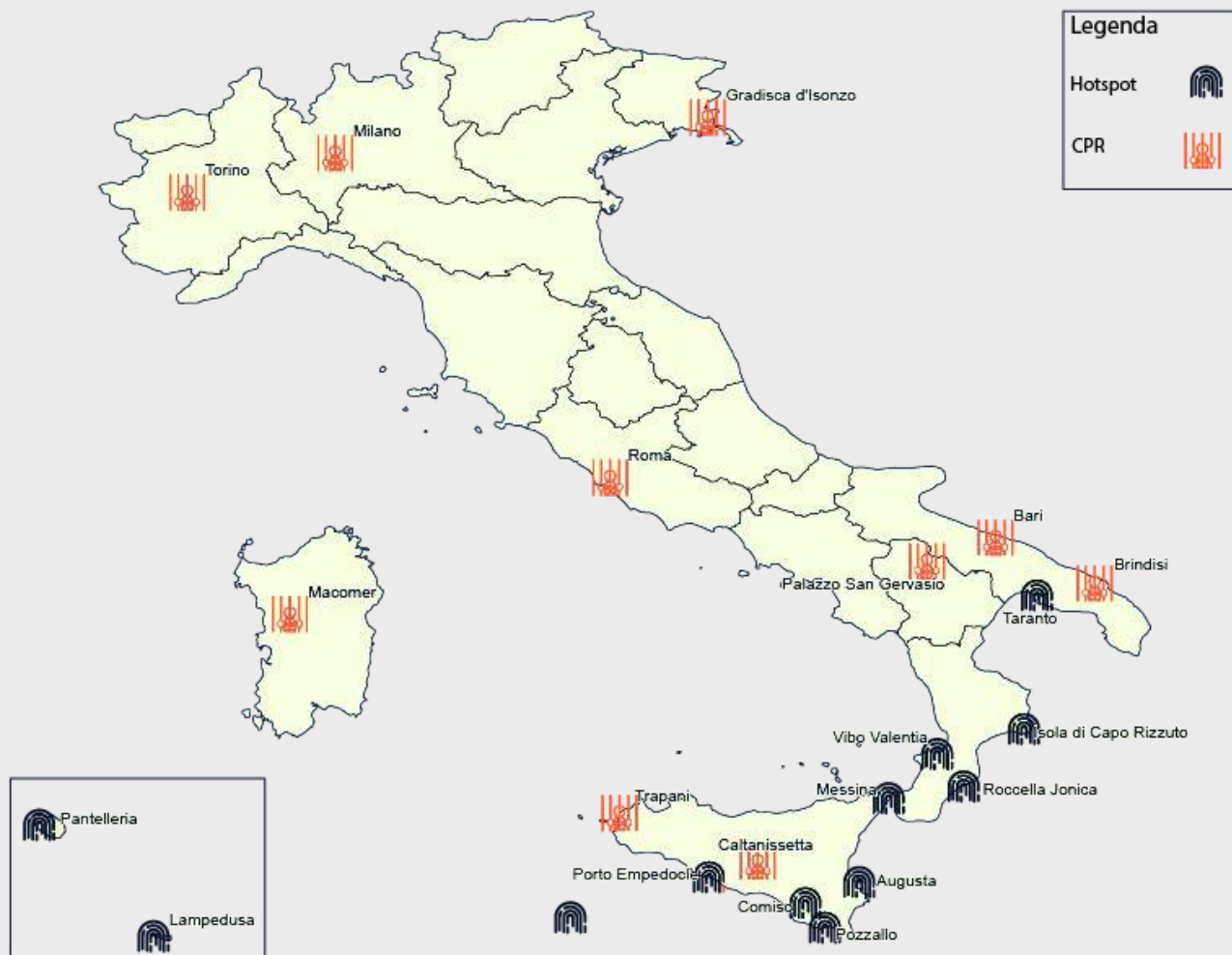


Repatriation of bodies: procedures and costs

- Repatriation of the body is possible, but requires a **complex and costly procedure**. Contact the consular authority or Embassy of your country of origin. Try to start this procedure quickly, before the body is buried in Italy.
- **Timelines:** can vary greatly and depend on the actors involved, authorities or private entities.

- **Costs:** some Embassies cover the cost of transport and repatriation of the body only if it has not yet been buried. In some cases, association funds, local authorities or Embassies of other countries can cover part of the expenses.
- **Who can help:** associations, foundations and some municipal administrations offer contributions or practical assistance for the repatriation of bodies. Some Muslim communities in Italy organize solidarity fundraising and offer logistical support.

7. DETENTION AND CUSTODY PLACES AFTER DISEMBARKATION: HOTSPOTS, CPR AND PRISON



Hotspot

- Hotspots are first reception facilities where people arriving in Italy after crossing the border or after sea rescue operations are taken. In these places, **people are registered with the personal details they declare to the authorities** (name, date of birth and nationality). People are **fingerprinted and photographed**.
- **There are currently 12 formally identified hotspots in Italy.**

- **The length of stay should be very short and not exceed 72 hours**, but in practice it varies, ranging from a few hours to several days. Inside the hotspots, people cannot freely leave the facility.
- Generally, except in certain specific circumstances, people in hotspots can contact their families, either via their own mobile phones or through communication means within the facility.



Administrative detention in CPR

- The Centri di Permanenza per il Rimpatrio (CPR, Repatriation Detention Centers) are places in Italy where foreign nationals without permission to remain in Italy (including asylum seekers) are **detained** for a certain period, **with the aim of repatriating them**, i.e., sending them back to their country of origin.
- They are **closed facilities** from which people cannot leave.
- **There are 10 CPRs active in Italy**, and another one located in Albanian territory. Despite limited transparency in their management, **CPRs are not secret prisons**. The people detained inside are identified, and upon request from a family member or a lawyer, the authorities are obliged to state whether a person is being held in a CPR.
- People can be detained in CPRs for up to a **maximum of 18 months**, although the time can be shorter.
- Detainees should have access to public phones or mobile phones, but often this is not the case. In practice, in many CPRs communication is difficult, and detainees report isolation, little information, and difficulties in contacting the outside.



- **If you think a family member might be detained in a CPR, see the contact list on p. 27.**



Arrest and detention in prison

- At the time of disembarkation, some people are subjected to actual interrogations by Italian and European police forces. These **procedures are used to identify alleged captains who steered the boats.**
- After disembarkation, those interrogated may be transferred to a hotspot or directly to prison.
- The duration of detention of those accused of “smuggling” varies (e.g., cases range from 1 to 10 years or more).
- After serving prison time, alleged captains are often transferred to CPRs.
- To find out if a family member is in this situation, **lawyers in Italy can be appointed to search for people in prison** (see page 27 for contacts).

8. APPENDICES



List of institutional actors

ACTOR	WHO THEY ARE	ROLE IN THE PROCEDURES
PUBLIC PROSECUTOR'S OFFICE	Judicial office coordinating investigations on possible crimes.	Decides whether to open an investigation; may order autopsies, collect identification data, and authorize burial.
STATE POLICE AND OTHER LAW ENFORCEMENT BODIES	Investigative section of the State Police at the Questure.	Receives assignments from prosecutors to show families photographs of unidentified bodies; carries out visual recognition of bodies; collects family members' statements to formalize identification.
FORENSIC POLICE	Technical branch of the police specialized in identification.	Collects post-mortem data (photos, fingerprints, DNA). Produces identification files.

PREFECTURE	Local representative office of the Government.	In some cases coordinates transport, burial and/or repatriation of bodies.
EXTRAORDINARY COMMISSIONER FOR MISSING PERSONS	Office, directed by a Prefect, within the Ministry of the Interior.	National coordination function for disappearances among Prefectures, law enforcement, judiciary, health authorities and other national/ international actors. Monitors institutional activities and maintains the National Register of Missing Persons.
FORENSIC DOCTORS / FORENSIC LABORATORIES (E.G. LABANOF)	Specialists in autopsy and biological identification.	Perform external cadaveric examinations, autopsies, collect DNA, estimate age/sex/height. Collaborate with Forensic Police for identification data.
MUNICIPALITIES / CEMETERY OFFICES	Local authority responsible for cemeteries and mortuary services.	Assign burial plots and keep burial records. Responsible for the custody of the body before and after burial.
COAST GUARD / PORT AUTHORITIES	State body responsible for rescue and surveillance at sea.	Recover bodies at sea. Report findings to Prosecutor's Office and Prefecture.
FUNERAL AGENCIES	Private operators authorized for body transport and burial.	Transport and bury bodies.

<p>LOCAL HEALTH AUTHORITY (ASL)</p>	<p>Public body of the National Health Service (SSN) operating locally.</p>	<p>Collaborates with municipalities and forensic doctors. Sends doctors to certify death and conduct first examinations of the body. Issues documents needed for repatriation.</p>
<p>ITALIAN/ INTERNATIONAL RED CROSS</p>	<p>Humanitarian organization auxiliary to public authorities.</p>	<p>Supports and assists public bodies. Through projects such as Restoring Family Links (RFL), works to re-establish and maintain family contact.</p>



Article 333 Code of Criminal Procedure – Private reports

- Commonly used to report deaths at sea or other serious events.
- Allows anyone (citizen, family member, organization) to report a serious event to the police or prosecutor that may constitute a crime.
- The report must be accepted by the police or prosecutor, who must take it into account.

Articles 12 and 12-bis Consolidated Immigration Act (Legislative Decree 286/98)

- Prohibits helping someone enter or stay in Italy without documents.
- Punishes those who help people arrive in Italy without documents (e.g., steering a boat), even if the act occurs abroad.
- If such assistance causes death or serious injury, penalties increase.
- Applies also to those who steer a boat out of necessity.

Law 241/1990 – Transparency and access to documents

- Families of missing or deceased persons can request access to documents concerning them.
- Every citizen has the right to see documents that concern them in dealings with the Public Administration.
- Authorities must justify their decisions and respond to citizens' requests.
- Procedures must be transparent and comprehensible.

9. CONTACTS



SOLIDARITY CONTACTS FOR THE SEARCH FOR MISSING DECEASED PERSONS

Below is a list of associations that can provide **free support** in the search, identification, burial and repatriation of your relatives.

They are **not public or institutional bodies**, nor private entities for profit.

They cannot replace the role of the state; they can **facilitate access to information** but this is not always guaranteed.

MEDITERRANEAN SEA	
SEARCH, RESCUE ALERT AND NEWS ON SHIPWRECKS	Alarm Phone https://alarmphone.org/fr/
RISK OF CRIMINALIZATION	Captain Support: https://www.facebook.com/CaptainSupportLegalAid/
	Dal mare al carcere: dalmarealcarcere@arci.it ; sportellosanspapiers@gmail.com

CENTRAL MEDITERRANEAN ROUTE

LAMPEDUSA	Legal support and solidarity in procedures of search, identification, burial and repatriation of bodies: MEM.MED info@memoriamediterranea.org
SICILIA	Legal support and solidarity in procedures of search, identification, burial and repatriation of bodies: MEM.MED info@memoriamediterranea.org
	Muslim community: CATANIA - 3272250199
	Muslim community: AGRIGENTO - Associazione Oltre il mare: azeddine-surf@hotmail.com
CALABRIA	Legal support and solidarity in procedures of search, identification, burial and repatriation of bodies: MEM.MED info@memoriamediterranea.org
	Legal support in search, identification, burial, and repatriation procedures: ASGI Medea medea@asgi.it
SARDEGNA	Legal support and solidarity in procedures of search, identification, burial and repatriation of bodies: MEM.MED info@memoriamediterranea.org

OTHER ROUTES TO AND FROM ITALY

BALKAN/ADRIATIC ROUTE

Legal support in search, identification, burial, and repatriation procedures:

ASGI Medea medea@asgi.it

Support in searching for people who are traveling:

Collettivo Rotte Balcaniche - Progetto Border Memory
bordermemorybg@gmail.com

ITALIAN-FRENCH BORDER

Solidale di Ventimiglia: borderkills@riseup.net

**EXCLUSIVELY FOR INFORMATION ABOUT THE STAY
OF A FAMILY MEMBER IN A HOTSPOT OR CPR**



**HOTSPOT (LAMPEDUSA,
PORTO EMPEDOCLE,
PANTELLERIA, POZZALLO,
MESSINA, TRAPANI,
AUGUSTA, CATANIA)**

Support in the research:
MEM.MED: info@memoriamediterranea.org

ASGI In Limine: inlimine@asgi.it

CPR

Rete Siciliana Contro il Confinamento
(CPR di Trapani Milo, CPR di Caltanissetta e
Hotspot):
+393517635899; +393280364920; +39347845 4648

LasciateCIEntrare (CPR italia): +393280364920

Asgi In Limine (CPR italia): +393478454648

NO CPR Milano: +39351973846

STOP CPR Roma (Cpr di Ponte Galeria):
+393280364920

Assemblea Lucana NO CPR
(Palazzo San gervasio, Potenza):
+393508540695

Assemblea NO CPR Macomer: +393280364920



INSTITUTIONAL CONTACTS - SICILY

	PREFECTURE EMAIL	PEC PREFECTURE	POLICE HEADQUARTERS AND IMMIGRATION OFFICE PEC
AGRIGENTO	prefettura.agrigento@interno.it	protocollo.prefag@pec.interno.it	gab.quest.ag@pecps.poliziadistato.it dipps101.00f0@pecps.poliziadistato.it
RAGUSA	prefettura.ragusa@interno.it	protocollo.prefsr@pec.interno.it	dipps170.00f0@pecps.poliziadistato.it dipps170.00PO@pecps.poliziadistato.it
SIRACUSA	prefettura.siracusa@interno.it	protocollo.prefsr@pec.interno.it	dipps178.00f0@pecps.poliziadistato.it dipps178.00FO@pecps.poliziadistato.it
PALERMO	prefettura.palermo@interno.it	protocollo.prefpa@pec.interno.it	dipps155.00FO@pecps.poliziadistato.it

<p>CATANIA</p>	<p><u>prefettura.catania@interno.it</u></p>	<p><u>protocollo.prefct@pec.interno.it</u></p>	<p><u>dipps127.00FO@pecps.poliziadistato.i</u></p> <p>dipps127.00PO @pecps.poliziadistato.it</p>
<p>TRAPANI</p>	<p><u>prefettura.trapani@interno.it</u></p>	<p><u>protocollo.preftp@pec.interno.it</u></p>	<p><u>dipps185.00FO@pecps.poliziadistato.it</u></p> <p><u>dipps185.00PO@pecps.poliziadistato.it</u></p>
<p>MESSINA</p>	<p><u>prefettura.messina@interno.it</u></p>	<p><u>protocollo.prefme@pec.interno.it</u></p>	<p><u>dipps145.00FO@pecps.poliziadistato.it</u></p> <p><u>dipps145.00PO@pecps.poliziadistato.it</u></p>



INSTITUTIONAL CONTACTS - CALABRIA

	PREFECTURE EMAIL	PEC PREFECTURE	POLICE HEADQUARTERS AND IMMIGRATION OFFICE PEC
REGGIO CALABRIA			<u>dipps168.00f0@pecps.poliziadistato.it</u> <u>dipps168.00p0@pecps.poliziadistato.it</u>
CROTONE	<u>prefettura.crotone@interno.it</u>	<u>protocollo.prefkr@pec.interno.it</u>	<u>dipps197.00f0@pecps.poliziadistato.it</u>



INSTITUTIONAL CONTACTS - SARDINIA

	PREFECTURE EMAIL	PEC PREFECTURE	POLICE HEADQUARTERS AND IMMIGRATION OFFICE PEC
CAGLIARI	<u>prefettura.cagliari@interno.it</u>	<u>protocollo.prefca@pec.interno.it</u>	<u>dipps118.00F0@pecps.poliziadistato.it</u> <u>dipps118.00p0@pecps.poliziadistato.it</u>

The practical guide for families was created by activists and relatives of missing persons from the MEM.MED Memoria Mediterranea association.

The graphic design is by Clara Anicito.

The cover photo was taken by Severine Sajous.

Memoria Mediterranea is funded by ActionAid International Italia E.T.S. and Fondazione Realizza il Cambiamento as part of the project “The CARE – Civil Actors for Rights and Empowerment,” co-funded by the European Union.

The CARE project – Civil Actors for Rights and Empowerment project, co-funded by the European Union and promoted by Fondazione Realizza il Cambiamento and ActionAid International Italia E.T.S., aims to promote, protect, and enforce the rights and values of the European Union with an approach based on the participation of rights holders and their empowerment in claiming their rights. The project involves 70 organizations active throughout Italy, thus creating a network for change capable of listening and responding to the specific and concrete needs of each territory and community.

Find out more about the project > thecare.actionaid.it

For more information on the entire project, contact The CARE – ActionAid Press Office at ufficiostampaactionaid@actionaid.org.

The content of this communication represents the opinion of the authors, who are solely responsible for it. Neither the European Union nor the EACEA can be held responsible for the information it contains or for the use that may be made of it. Similarly, ActionAid International Italia E.T.S. and Fondazione Realizza il Cambiamento cannot be held responsible.